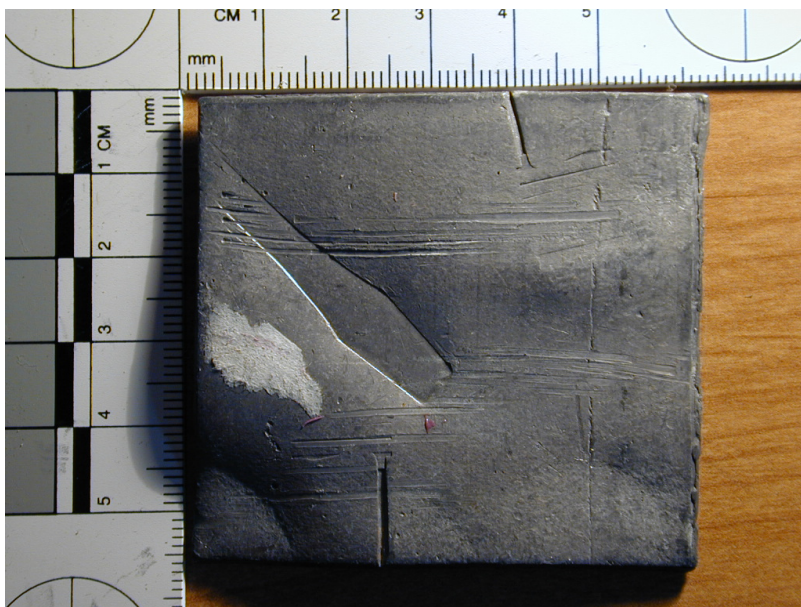




**INTERNATIONAL
CRIME SCENE INVESTIGATORS
ASSOCIATION**
www.icsia.org

[Kyprianos Georgiou](#) and [Kalisa Hadji](#) Editors

From the Editors



Dear members,


We hope you are all well and you are recovering well from the journey back from the conference.

Unfortunately, we were unable to attend the conference this year due to health issues, however, we know that it was a great success.


We would also like to apologise for the delay in releasing the newsletter.

We are now approaching the summer months which means no more scene examination in the rain, snow, wind or cold

Like mentioned in previous editions, we will be exploring

 [Friend on Facebook](#)

 [Follow on Twitter](#)

 [Forward to a Friend](#)



AccuTrans

AccuTrans has been specially developed for forensic applications. This state-of-the-art polyvinylsiloxane material offers high tear resistance and the best dimensional stability. Transparent material eliminates reverse prints

For more information about AccuTrans [click here](#)

Also, please [read the handout](#) for this product



Tools of the Trade:

different issues that CSIs are phased with on their day-to-day work. This month's edition, we will be exploring "Toolmarks".

The articles attached will hopefully interest you. They will portray how toolmarks can be used as evidence in an investigation..

If you have any questions or comments or if you would like to contribute any articles in future newsletters, please do not hesitate to contact us through the following links K.Georgiou@tees.ac.uk or Kalisa@hadji.co.uk

Director's Letter

Greetings from the Executive Director!

The 2016 CSI Conference was a success! While we may not have had the attendance we would have liked to have seen we did have a quality program to deliver! ASPCA brought a 82ft Semi Truck/Trailer that is set up for Forensic Animal Crime Scenes and the attendees were allowed a tour through it. A Crime Scene Hazardous Material Team from Kansas delivered an outstanding program and presented very valuable information to the attendees. There were lectures in the morning and demonstrative presentations in the afternoon. One evening was used for night photography and mock crime scene interpretation. The hotel was outstanding, the food was great and the networking was a success! All in all, I was very happy with the conference. We have photographs posted on the web site taken during the three days of the conference. <http://www.icsia.org/conference/2016/photos/index.html>

While I would like to thank all the attendees for attending the conference we were fortunate to have 2 from Pakistan and 5 from Belize in attendance! CSI's are CSI's worldwide. We all have the same problems and frustrations. We also have 17 new members that signed up at the conference! Welcome to ICSIA!

I would like to thank the vendors for their support at the conference. Please support the vendors that attended as they support ICSIA. You will see their photos on the web site too.

I also would like to thank the presenters as we do not pay any fees to get the presenters to attend and share their knowledge with us, thank you!

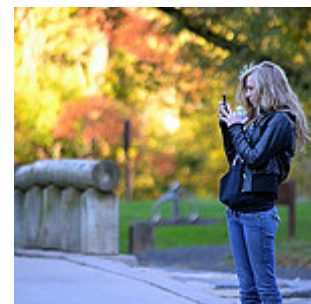
Dealing with unusual Surfaces

By Dick Warrington

This article originally appeared in [Forensic Magazine®](#) August 2013, Reprinted with Permission.

For the past several years, I've taught a class on developing and lifting prints off unusual surfaces. This class is very popular because it shows Crime Scene Officers that the only "surfaces" where you can't get prints are air and water; everything else can be processed with the right products and the right technique. In this issue, I'll provide an overview of advanced ways to deal with unusual surfaces.

Read the full article [here](#)



Above photo by: [John-MTSOfan on Flickr.com](#)

Lastly I want to thank the officers and those that worked tirelessly in the background for making this conference a success!

Next year we are looking at CSI Conference in the Phoenix, Arizona area. Watch the web site for updates!

Stay safe and be ACTIVE in ICSIA! Spread the word about us!

Hayden B Baldwin, Executive Director
International Crime Scene Investigators Association
www.icsia.org
hbb@icsia.org

Cellebrite

Formed in 1999, [Cellebrite](#) has worked with a number of agencies world-wide. They can help in criminal investigations by analysing mobile devices, websites, cloud systems and many more.

Click [here](#) for visiting the website.

ICSIA's 2017 Conference



Phoenix, Arizona, 2017.

Further details will be provided at a later date.

Book your place now for another great conference.

Macro Photography DOF

By Hayden Baldwin

In macro photography DOF, Depth of Field, is extremely important in forensic photography to assure the maximum DOF is achieved to get all of the main objective is in focus. The examples below show the difference in the f-stop used and the results of that setting. The larger the f-stop number then more of the object is in focus. (The larger the number, the smaller the actual aperture).

For the full article please click [here](#).

Choosing the correct lens, could lead to taking great images of toolmarks.

Please click [here](#) to see some examples of toolmarks taken with a macro lens.

Potential Evidence from a tool

By Hayden Baldwin

Tools found at crime scene has greater potential than just a tool mark. The evidence potential includes but is not limited to, fingerprints (ridge detail, as some could be partial palm prints), DNA from the ridge detail smudges, trace from the object priced (paint transfer, wood, metal), hairs and fibers, and the bar code from the price label.

For the full article please click [here](#).

Online Training

ICSIA collaborated with the Criminal Justice Institute of the University of Arkansas to produce an online training course: [Crime Scene First Responder For The Uniformed Officer](#)

Future Editions of "The Examiner"

The themes for the following 2 editions of the "The Examiner" are:

- 1) [July 2016](#): Firearms
- 2) [September 2016](#): Drugs and poisons

If you would like to contribute any papers/articles/stories from your experiences about any of these themes, please do not hesitate to [contact us here](#) with your papers in order to include them in our future newsletter.

Thank you

[follow on Twitter](#) | [friend on Facebook](#) | [forward to a friend](#)

Copyright © 2016 The International Crime Scene Investigators Association, All rights reserved.

You are receiving this newsletter because of your membership in the International Crime Scene Investigators Association.

Our mailing address is:

The International Crime Scene Investigators Association
PMB 385
15774 S. LaGrange Rd.
Orland Park, IL 60462

MailChimp

[Add us to your address book](#)

[unsubscribe from this list](#) | [update subscription preferences](#)