



[Kyprianos Georgiou](#), Editor

## From the Editor



Dear members,

Welcome to 2016. I hope it has gotten off to a good start. Unfortunately, the holidays are over and our lives are now back to the routines. Crimes are going to be committed and it is our job to bring those to justice.

"A new year is like a blank book, and the pen is in our hands. It is our chance to write a beautiful story for ourselves". Happy New Year.

It is now time for our next newsletter "The Examiner". Like I mentioned in previous editions, we will be exploring different issues that CSIs are phased with on their day-to-day work. This month's edition, we will be exploring "DNA and Biological evidence".

DNA is advancing every day. Technology is improving and the techniques being used are so much more sensitive. DNA is able to be processed in a matter of hours rather than days. Being part of the generation where these changes are happening so rapidly is very exciting.

 [Friend on Facebook](#)

 [Follow on Twitter](#)

 [Forward to a Friend](#)

 **SCENE PD 6.0**  
**ScenePD**

ScenePD is the complete crash and crime scene diagramming tool developed for officers in the field. It is an intuitive program that employs a large library of intelligent objects to quickly and accurately diagram complex crime scenes, from domestic abuse and murder, to simple floor mapping. Upgrade to our Pro Bundle to take advantage of GIS, digital evidence, and mobile capabilities.

For more information about ScenePD [click here](#)



---

## Preventing Crime Scene Contamination

If you have any questions or comments or if you would like to contribute any articles in future newsletters, please do not hesitate to contact me through this link [K.Georgiou@tees.ac.uk](mailto:K.Georgiou@tees.ac.uk)

---

## Director's Letter

Greetings from the Director!

Hayden B Baldwin, Executive Director  
International Crime Scene Investigators Association  
[www.icsia.org](http://www.icsia.org)  
[hbb@icsia.org](mailto:hbb@icsia.org)

---

## ICSIA's 2016 Conference



Kansas City, Missouri  
Welcomes the 2016 ICSIA Conference.  
May 17 - 19, 2016.

Book your place now for another great conference.

---

## Wherefrom came those spots?

By Larry Barksdale

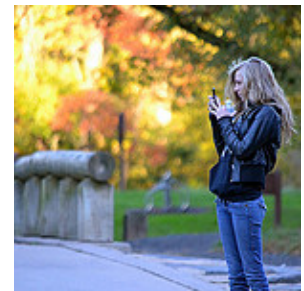
Investigators experienced with scenes involving decomposed bodies are familiar with the value of nature's busy clean-up crews. The most known of these crews (the flies, maggots, and pupae) can provide valuable information pertaining to the time of death. That information could prove crucial to the reconstruction and interpretation of a criminal event. On another page, flies might leave information that could produce confusion within the scene. The following photo illustrates a portion of a scene with numerous geometric patterns like small dots(1). The geometric patterns are not unlike those associated with medium to high velocity blood spatter. In fact, the stains are those produced from the action of flies. If the scene was one in which a human victim was murdered and sustained gunshot

By Dick Warrington

This article originally appeared in [Forensic Magazine®](#) January 2014, Reprinted with Permission.

A call comes in, and officers race to the crime scene. Crime Scene Officers investigating a scene have a crucial responsibility: to find and preserve evidence. In the past, we simply pulled on a pair of gloves and maybe a mask to filter out odors, and got to work. Nowadays, we know that's not enough to protect scenes from unintentional contamination of evidence. Contamination is a serious problem that can ruin evidence and jeopardize a criminal case.

Read the full article [here](#)



Above photo by: [John- MTSoFan on Flickr.com](#)

---

## Cellebrite

Formed in 1999, [Cellebrite](#) has worked with a number of agencies world-wide. They can help in criminal investigations by analysing mobile devices, websites, cloud systems and many more.

Click [here](#) for visiting the website.

wounds and the body was found near the above-depicted stains, one would have a task at hand to explain the stains.

For the full article please click [here](#).

---

## Latent Bloodstains Fluorescein reagent

Translated by Bert VanDijck

Fluorescein reagent can be used for the enhancement of latent bloody marks OR when there is a very poor contrast between the mark and the background.

If possible, blood samples are taken before the reagent is used.

DNA- fingerprint is possible after the use of this reagent.

For the full article please click [here](#).

---

## Online Training

ICSIA collaborated with the Criminal Justice Institute of the University of Arkansas to produce an online training course: [Crime Scene First Responder For The Uniformed Officer](#)

---

## Future Editions of "The Examiner"

The themes for the following 2 editions of the "The Examiner" are:

- 1) [March 2016](#): Trace Evidence.
- 2) [May 2016](#): Toolmarks

If you would like to contribute any papers/articles/stories from your experiences about any of these themes, please do not hesitate to [contact us here](#) with your papers in order to include them in our future newsletter.

Thank you

[follow on Twitter](#) | [friend on Facebook](#) | [forward to a friend](#)

Copyright © 2016 The International Crime Scene Investigators Association, All rights reserved.

MailChimp

[unsubscribe from this list](#) | [update subscription preferences](#)